

Alaska Department of Fish and Game

Habitat Section
Southeast Region



112-50-10100

CORRECTION

Water body name: Pavlof River

Survey date: 9/14/2022

Quad: Sitka D-4

Species & Lifestage: CHs,COp,Ps,Sp,CTp,DVp

Upper Reach Latitude: 57.842476 **Longitude:** -135.163914

Survey crew: EF, DK, RR

Lower Reach Latitude: 57.843873 **Longitude:** -135.029335

Findings: We surveyed this cataloged stream using GPS and found that the stream path is incorrectly mapped. We observed juvenile coho salmon throughout the channel. The upper extent of the cataloged stream mobilized in response to a landslide (Table 1; Figures 1, 2).

Recommendations: Correct Stream No. 112-50-10100 in the anadromous waters catalog to reflect the field verified stream path and add rearing coho salmon to species (Figure 3). Also extend the downstream reach of stream into the intertidal (Figure 4).

Nomination: Pending

Table 1.—112-50-10100 survey data.

| Waypoint | Latitude | Longitude | Notes | Stream Width ft | Stream Substrate | Habitat Features | Gradient % | Sample Effort | Sample Results |
|----------|-----------|-------------|--|-----------------|------------------|------------------|------------|---------------|----------------|
| 1821 | 57.843596 | -135.164385 | Road covered in landslide, impassable. Ponded area caused by landslide. Tadpoles. | | | | | | |
| 1822 | 57.843435 | -135.165096 | Stream covered by massive landslide. Coho in pool at base of landslide. | 2-4 | | | 2-4 | VI | 3 CO |
| 1842 | 57.842481 | -135.163934 | Make route correction for cataloged stream. Juvenile CO swimming all over in newly formed channel. | | | | | VI | 30 CO |



Figure 1.—View of landslide from waypoint 1842.



Figure 2.—Newly formed/navigated channel at waypoint 1842.

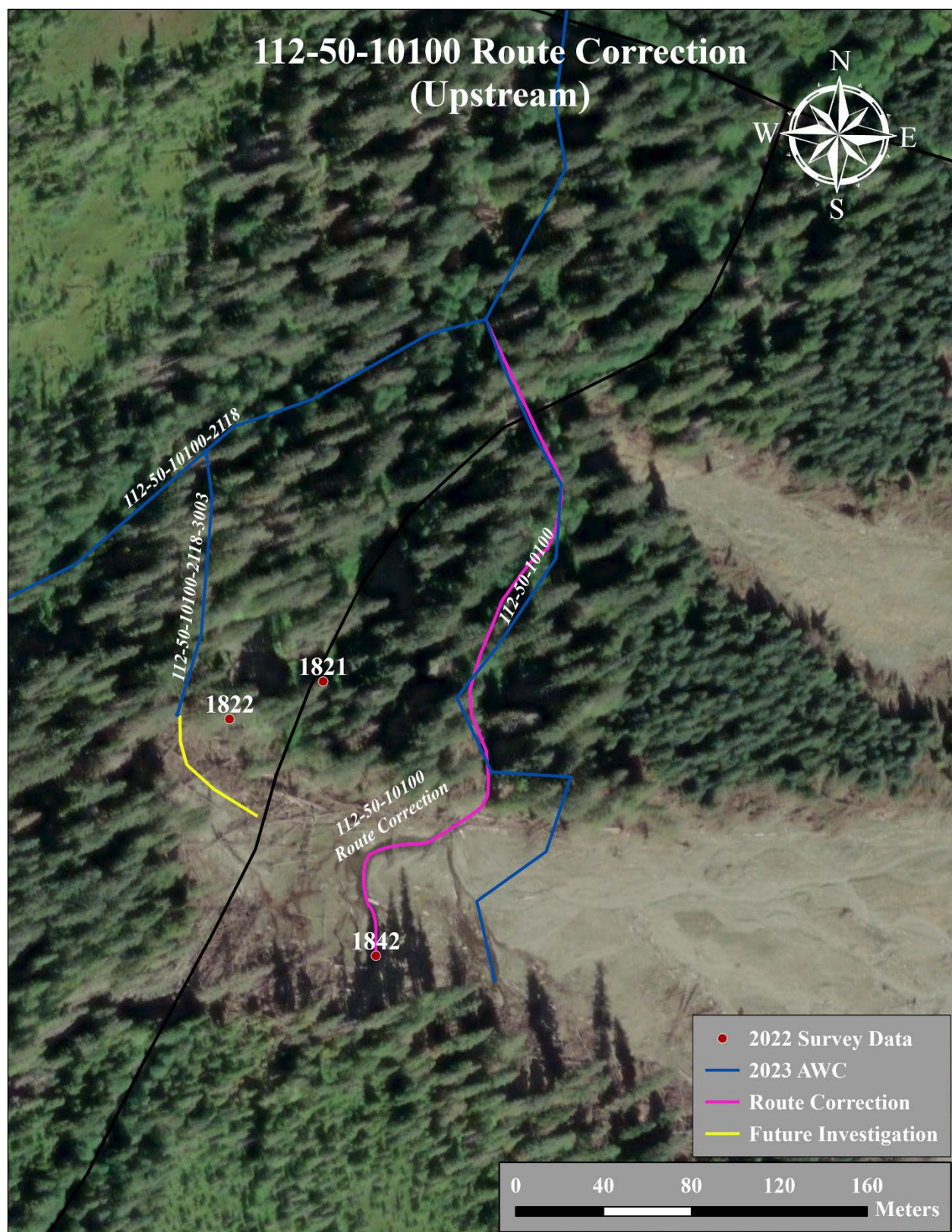


Figure 3.—112-50-10100 route correction (upstream) map.



Figure 4.—112-50-10100 route correction (downstream) map.